

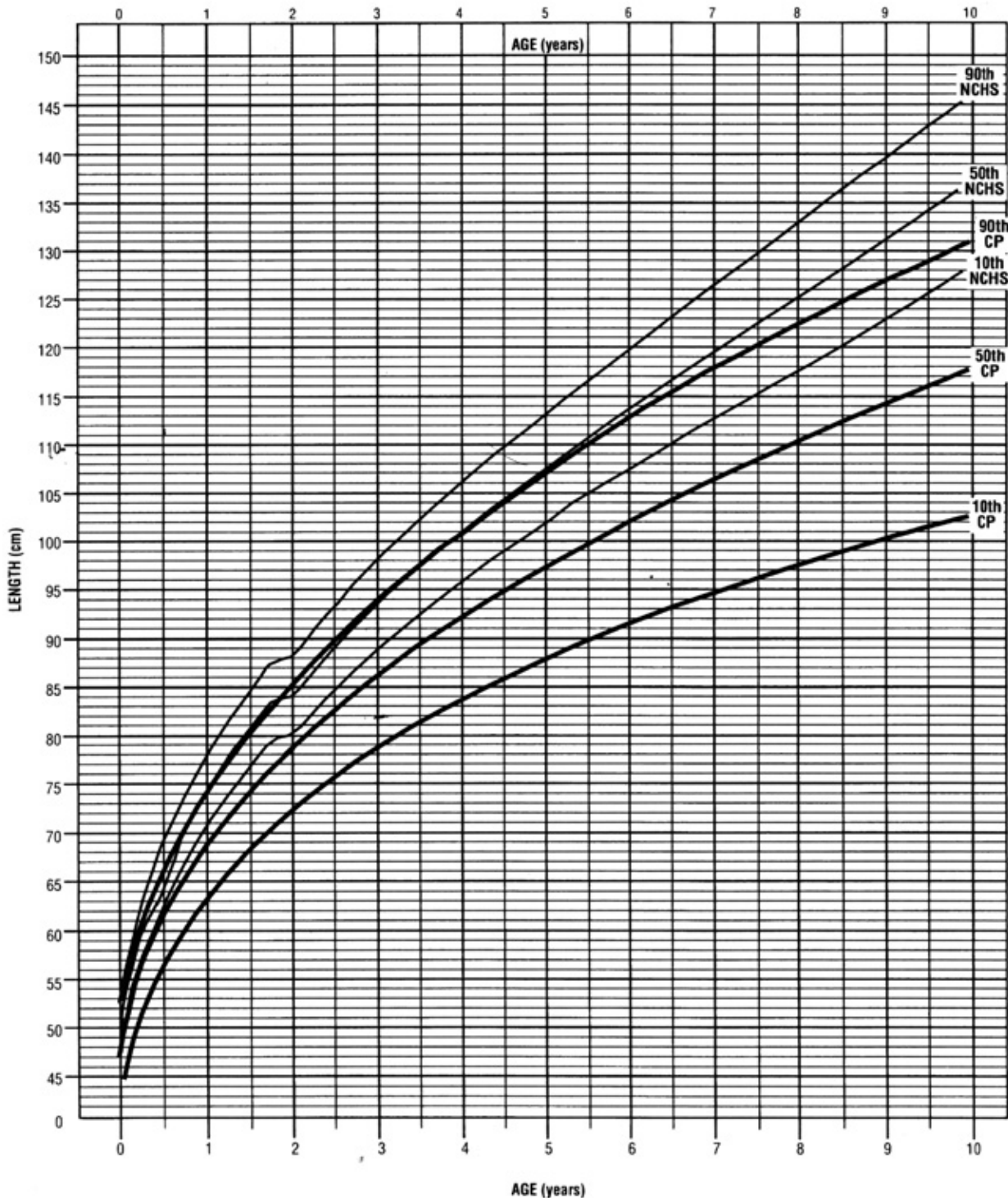
Cerebral Palsy-Quadriplegia

Girls: 0 to 10 Years

Length / Age

Name _____

■ Cerebral Palsy — NCHS



* Percentiles derived from National Center for Health Statistics (1979)
** Cerebral Palsy percentiles from Krack, J., Murphy, P., Miller, P., Zepher, S., and Wright, E. Pattern of growth in children with cerebral palsy. Journal of the American Dietetic Association 96:680-685 (1996).

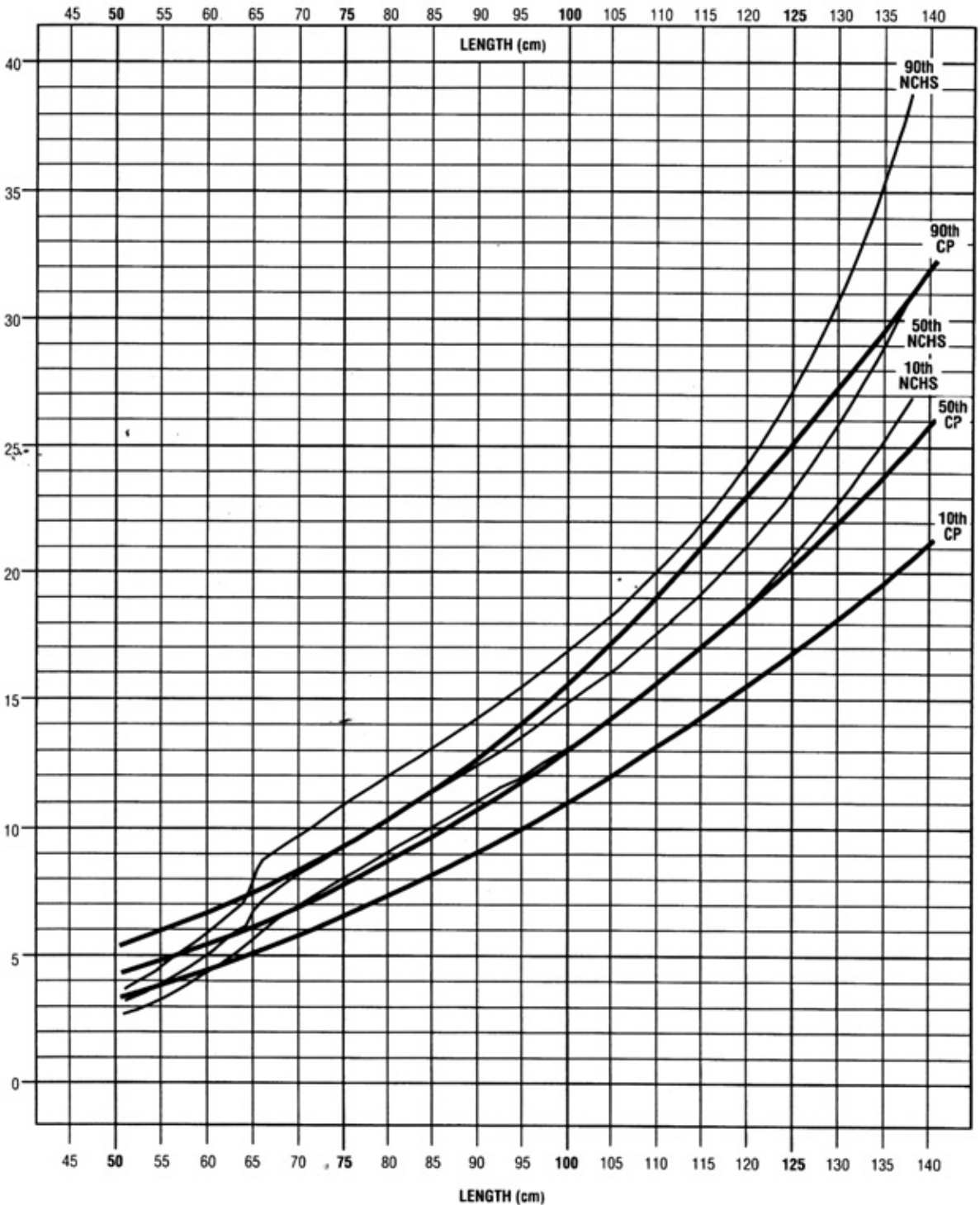
Cerebral Palsy-Quadriplegia

Girls: 0 to 10 Years

Weight / Length

Name _____

■ Cerebral Palsy — NCHS



* Percentiles derived from National Center for Health Statistics (1979)
** Cerebral Palsy percentiles from Krick, J., Murphy, Miller, P., Zager, S., and Wright, E.
Pattern of growth in children with cerebral palsy. Journal of the American Dietetic Association 96:680-685 (1996).

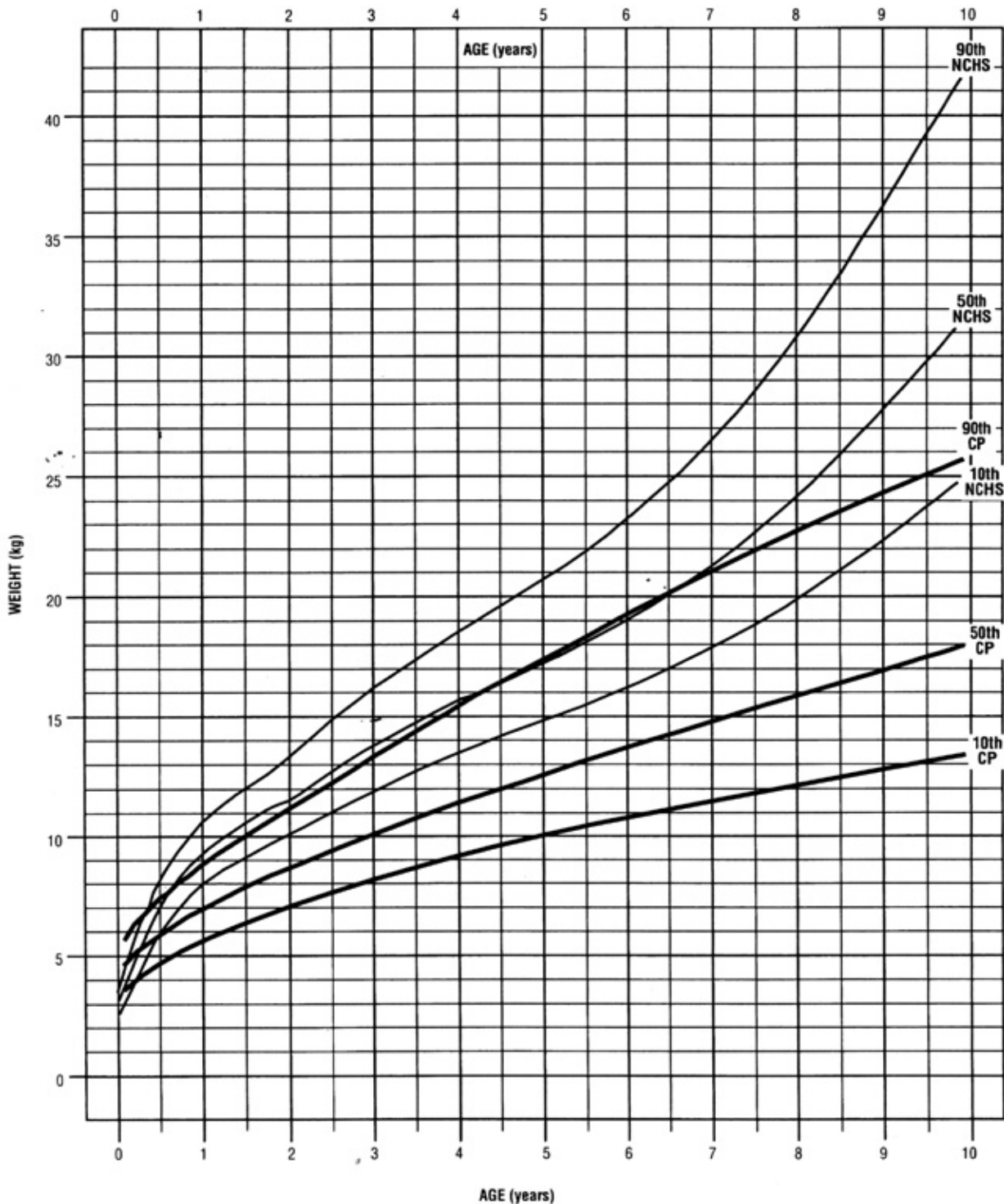
Cerebral Palsy-Quadriplegia

Girls: 0 to 10 Years

Weight / Age

Name _____

■ Cerebral Palsy — NCHS



• Percentiles derived from National Center for Health Statistics (1979)
• Cerebral palsy percentiles from Krick, J., Murphy, P., Zieger, S., and Wright, E.
• Pattern of growth in children with cerebral palsy. Journal of the American Dietetic Association 96:680-685 (1996).

DATE	AGE	LENGTH	WEIGHT	COMMENT

Notes

Growth References for Children with Quadriplegic Cerebral Palsy

These population specific references for children with quadriplegic cerebral palsy will facilitate uniformity in your clinical appraisal of growth and nutritional status. Deviations in growth may be the first or only signal of a more serious underlying health problem that requires assessment. This chart will also help you to educate families about the issue of growth and aid in evaluating the efficacy of your intervention strategies.

The estimate of ideal body weight is in part determined by the severity and topography of cerebral palsy. For those children with quadriplegia, ideal body weight should accommodate the principles of assuring good health by maintaining adequate fat and muscle stores and allow for ease in daily physical care and management.

Krick J, Murphy-Miller P, Zeger S, Wright E. *Pattern of growth in children with cerebral palsy.* Journal of the American Dietetic Association, 1996; 96:680-685.



Kennedy Krieger Institute
 707 North Broadway
 Baltimore, Maryland 21205
www.kennedykrieger.org